



# The Brighter Side

SUNRISE LIGHTING SYSTEMS, INC.

Volume 2, Issue 4

September 2010

## In This Issue

### Tube Lighting Products:

Strands	2
Indoor /Outdoor	2
Reels/Accessories	2
Solid State Power Supplies	3
Contacts	4
What's New	4

## Strands



# Tube Lighting Products

**Innovation \* Commitment \* Execution**

## "Featuring Strands"

- These versatile LED tapes are for 12VDC and can be used in virtually any place that light is required!

### Benefits & Features:

- Indoor and Outdoor Options
- Comes in many colors — Red, Blue, Green, Amber, White 6000 degrees, and Warm White 3100 degrees
- Fully Dimmable
- Field cuttable every 2 inches
- 1.4 Watts per foot



Tube Lighting Products-Producing high Quality Low Voltage Lighting

**A PRODUCT WITH THE HIGHEST LEVELS OF PERFORMANCE & CUSTOMER SATISFACTION**

FOR MORE INFORMATION SEE:  
[HTTP://WWW.TUBELIGHTINGPRODUCTS.COM](http://www.tubelightingproducts.com)

# Indoor/Outdoor Reels



### Indoor

**Red**  
DSH-12V-RD

**Amber**  
DSH-12V-AM

**Green**  
DSH-12V-GN

**Blue**  
DSH-12V-BL

**Warm White**  
DSH-12V-W31

**White**  
DSH-12V-W60

### Outdoor

**Red**  
DSHWL-12V-RD

**Amber**  
DSHWL-12V-AM

**Green**  
DSHWL-12V-GN

**Blue**  
DSHWL-12V-BL

**Warm White**  
DSHWL-12V-W31

**White**  
DSHWL-12V-W60

# Accessories

### Indoor



Mounting Track  
DSH-MT

Power Feed  
DSH-PF24



Jumper Connector  
DSH-JMPR/X

Power feed Adapter  
photo not available

### Outdoor



Mounting Track  
DSHWL-MT

End Cap  
DSHWL-EC



Mounting Clip  
DSHWL-MC

Power Feed  
DSHWL-PF



**Indoor/Outdoor  
(Solid State Power Supplies)**



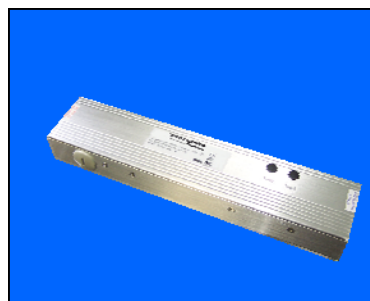
**17W**  
DSH-DR17

**25W**  
DSH-DR25



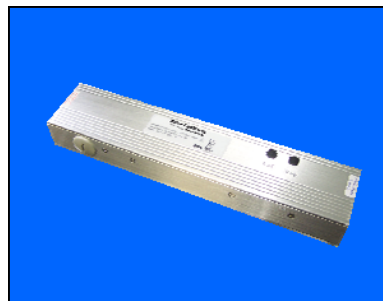
**40W**  
DSH-DR40

**60W**  
DSH-DR60



**240W**  
DSH-DR240

**60W DIMMABLE**  
DSH-DR60-DIM



(For more information please contact the office for a full brochure)



## **SUNRISE CONTACTS:**

**Robert** - Owner

robert@sunriselightingsystems.com

**Henry** - Owner

henry@sunriselightingsystems.com

**Jeff** - Northern Salesman

jeff@sunriselightingsystems.com

**Dean** - Southern Salesman

dean@sunriselightingsystems.com

**Ron** - Municipalities

ron@sunriselightingsystems.com

**Jeremy** - Quotations

jeremy@sunriselightingsystems.com

**Sam** - Quotations

sam@sunriselightingsystems.com

**Megan** - Order Entry /

Customer Service

megan@sunriselightingsystems.com

**Gina** - Project Order Entry/Customer Service

gina@sunriselightingsystems.com

## ***WHAT'S NEW !***

# **Welcome Back Gina!!**

## ***YOUR THOUGHTS AND INPUT***

So many options and choices! Need more information? Look no further than a phone call or e-mail away.

Your question may be something that is on the minds of others as well and could be published in our new monthly newsletter. So, if you have a topic or a product that you would like to see more information on, please send the request to Gina and we will be sure to include in a future issue.

Thank you!

[gina@sunriselightingsystems.com](mailto:gina@sunriselightingsystems.com)



If you wish to unsubscribe from our monthly newsletter please click on the Link:

[Unsubscribe](#)

## ***Sunrise Lighting Systems, Inc.***

360 W. BEDFORD AVE, SUITE 116

FRESNO, CA 93711

PHONE: 559-435-6090

FAX: 559-435-6089

[WWW.SUNRISELIGHTINGSYSTEMS.COM](http://WWW.SUNRISELIGHTINGSYSTEMS.COM)

**Do it right  
the first time!**